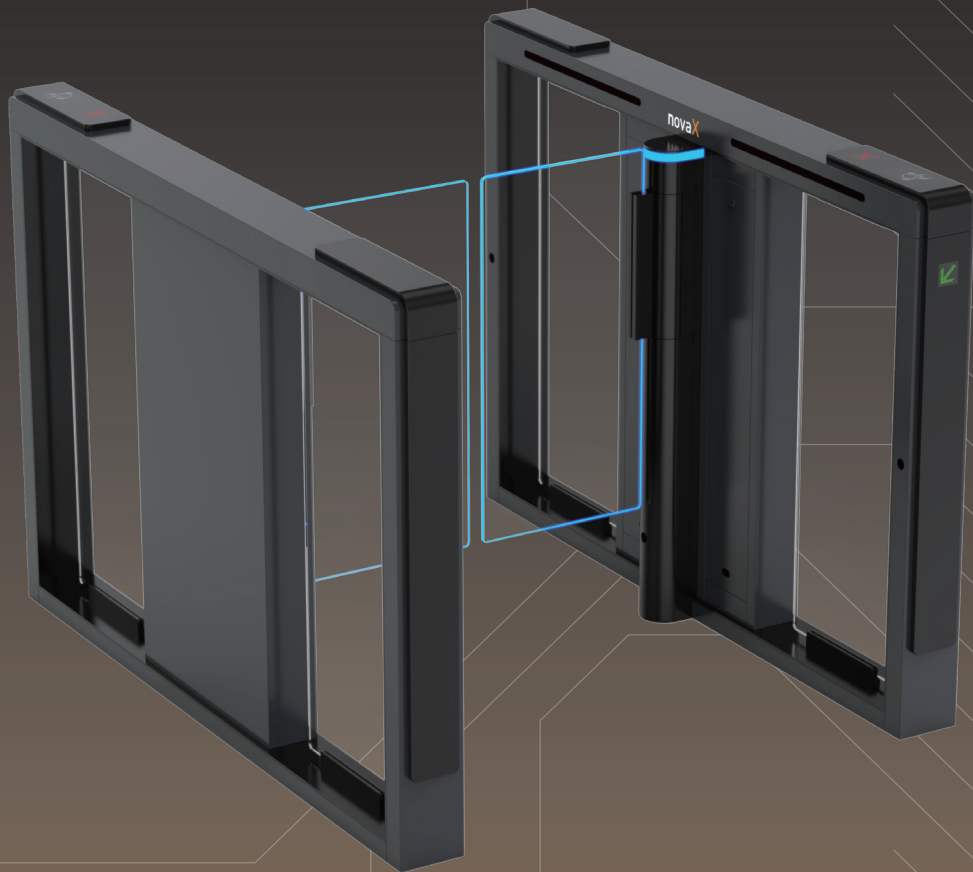


novaX



NT-D20

NT Series
Quantum Speed Gate



International Quality Standards | Lead-edge Technologies | User-friendly Design

MAKE IT SMARTER

PRODUCT INTRODUCTION



Designed for high-end applications, NT-D20 features an elegant black-and-white aesthetic. It handles high traffic efficiently at 45 people per minute. With flexible passageway widths up to 1200mm for wheelchair access and glass heights up to 1800mm for enhanced security, it offers a versatile solution for demanding environments.

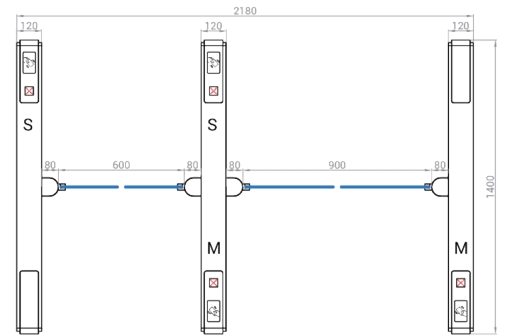
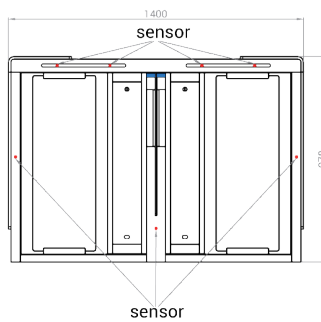
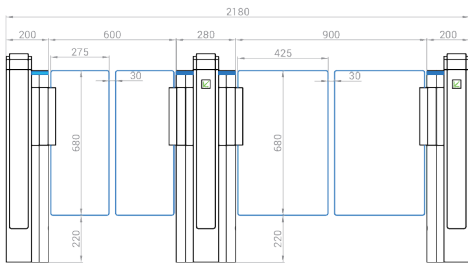
CREDENTIALS

- Remote Control
- Touchless Button
- Card
- QR Code
- Fingerprint
- Facial Recognition
- Palm Vein

FUNCTIONAL FEATURES

- Collision & Security Control: Durable mechanism prevents any unauthorized entry and resists external impact
- Infrared Sensor: Detects any illegal and reverse intrusion
- Single / Two-way Entry: Allow entry from one or both directions
- Panel LED Indicator: Green arrow: access granted; Red cross: access denied
- Strips LED Indicator: Blue light: power on; Green light: access granted; Red light: access denied
- Access Control System Integration
- Easy Installation & Maintenance
- Quiet and Smooth Operation
- Alarm Alerts for Unauthorized Access
- Automatic Arm Reset: Arms return to their default position, regardless of interruption

BASIC SPECIFICATIONS



SPECIFICATIONS

	NT-D20
Housing Material	Steel + Tempered Glass
Arm Material	Acrylic 10mm Tempered glass 8mm /10mm (optional)
Dimensions	Standard 1400 mm (L) × 120 mm (W) × 978 mm (H)
Infrared Sensor	Standard 7 pairs
Intended Use	Indoor / outdoor (upgradable)
Communication	Dry contact, Relay signal, RS485
IP Level	IP54 (standard), IP65 (upgradable)



KEY TECHNICAL METRICS

■ Throughput:	45 people/minute	■ Power Drive:	DC 24V
■ Door Opening:	90° to the middle	■ Supply Voltage:	AC110V ± 10% 60Hz, AC220V ± 10% 50Hz
■ Movement Angle:	180°	■ Power Consumption:	40W
■ Lifespan:	≥15M times	■ Operating Temperature:	-20 °C to 75 °C
■ Operating Speed:	0.1s – 1.2s	■ Operating Humidity:	0 – 95% in non-condensing state
■ MCBF:	15 million		
■ Safety Mechanism:	Gate open automatically upon power failure		

CUSTOMIZABLE OPTIONS

Appearance:	Customizable body colors
Passage Width:	600 mm (standard), 1200 mm max. (optional)
Arm Glass:	900 mm (standard), 1800 mm max. (optional); hollow glass available for extreme size
Card Reader Size:	Customizable up to 100 mm (L) × 60 mm (W) × 25 mm (T)
Infrared Sensor:	Standard 7 pairs and number expandable
Turnstile Base:	Optional configuration available
Operating Speed:	Customizable to meet site requirements